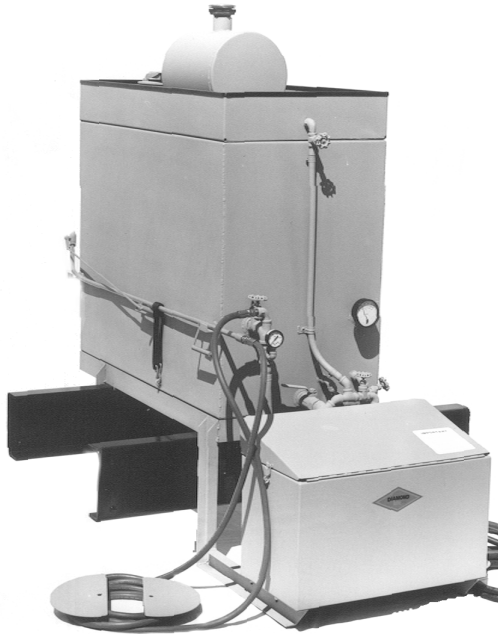




PAVE-MATE MODEL PM040, PM130, AND PM200 TRUCK MOUNT UNITS FOR DISTRIBUTION OF CUTBACK AND EMULSIFIED LIQUID ASPHALT*



PM130G-DF

130-gallon unit; heated by truck engine coolant;
5.5 bhp Honda® engine driven emulsion pump;
pump and engine mounted below top of truck frame;
25 ft. spray wand hose with D-wraps;
7-gallon flushing tank; and 7-gallon recovery tank.



PM040CG

40-gallon unit; heated by truck engine coolant;
5.5 bhp Honda® engine driven emulsion pump;
unit mounts across truck frame;
25 ft. spray wand hose with D-wraps;
and 7-gallon flushing tank.

QUALITY FEATURES PROVIDED WITH EACH GEM...

- ◆ Precise control of spray volume and pressure from a positive displacement gear pump and adjustable pressure relief.
- ◆ Even mixing and heating of oil from a recirculation system that minimizes asphaltic buildup.
- ◆ Four pass heating coils
- ◆ Two 10-foot hoses with fittings for attachment to truck engine cooling system.
- ◆ Non-pressurized tank eliminates danger of explosion or sudden pressure release during filling.
- ◆ Fast cleanup using efficient solvent flushing system that cleans the pump, plumbing, hose, and spray wand.

*Not in compliance with D.O.T. requirements for use with flammable materials with flash points below 100°F.

*Ask for information on 60, 230, 400, and
800-gallon Pave-Mate models and
SurSeal Slurry Equipment.
All real gems from **Diamond-bilt!***

BUY A REAL GEM ...

PAVE-MATE

...BY DIAMOND BIT

Model Specifications and Options
STD=Standard OPT=Optional

	PM040CCP	PM040CG	PM040CM	PM040UCP	PM040UG	PM040UM	PM130CPM	PM130G-DF	PM130G-SF	PM130M	PM200CPM	PM200G-DF	PM200M
BITUMINOUS OIL AND FLUSHING TANKS	40	40	40	40	40	40	130	130	130	130	200	200	200
Net Liquid Oil Capacity (U.S. Gallons +5% Expansion)	40	40	40	40	40	40	130	130	130	130	200	200	200
Lockable Fill Opening Diameter (OH Tank)	4"	4"	4"	4"	4"	4"	10"	10"	10"	10"	10"	10"	10"
Number of Surge Baffles							1	1	1	1	1	1	1
Graduated Measuring Stick							STD	STD	STD	STD	STD	STD	STD
Net Liquid Flushing/Recovery Capacity (U.S. Gallons)	7/7	7/7	7/7	7/7	7/7	7/7	7/7	7/7	7/7	7/7	7/7	7/7	7/7
Fill Opening Diameter (Flushing/Recovery) Tank	2 1/4"	2 1/4"	2 1/4"	2 1/4"	2 1/4"	2 1/4"	2 1/4"	2 1/4"	2 1/4"	2 1/4"	2 1/4"	2 1/4"	2 1/4"
Oil Pumping Capacity (GPM)	13	13	13	13	13	13	13	13	13	13	13	13	13
Drive: V-belts with Centrifugal Clutch		1			1			1				1	
Hinged Hood Over Pump/Engine Assembly		STD			STD			STD				STD	
5.5 BHP Honda Gasoline Engine w/Recoil Start (Z5HE)		STD			STD			STD				STD	
Recirculating Truck-Engine Coolant w/4 Pass Coils in OH Tank	STD	STD	STD	STD	STD	STD	STD	STD	STD	STD	STD	STD	STD
Steel Frame Rail Channel Section	3"	3"	3"	3"	3"	3"	3"	3"	3"	3"	3"	3"	3"
Black Enamel	STD	STD	STD	STD	STD	STD	STD	STD	STD	STD	STD	STD	STD
Yellow (ZYEL) Orange (ZORG) Red (ZRED) White (ZWHT)	OPT	OPT	OPT	OPT	OPT	OPT	OPT	OPT	OPT	OPT	OPT	OPT	OPT
Height-unloaded (Top of frame up/Top of frame down)	38 7/8"	38 7/8"	38 7/8"	38 7/8"	38 7/8"	38 7/8"	48 7/8"	48 7/8"	48 7/8"	48 7/8"	53 1/8"	53 1/8"	53 1/8"
Width	24"	27"	24"	30"	30"	30"	26"	27"	27"	26"	26"	27"	26"
Length	53"	67"	53"	51"	63"	51"	65"	75"	75"	65"	77"	87"	77"
Net Weight (Dry) excluding Options (U.S. Pounds)	280	340	265	300	350	285	505	560	560	490	555	610	540
Installation Instructions	STD	STD	STD	STD	STD	STD	STD	STD	STD	STD	STD	STD	STD
Fifty (50) Foot Spray Wand Hose (Z50H)	OPT	OPT	OPT	OPT	OPT	OPT	OPT	OPT	OPT	OPT	OPT	OPT	OPT
5.5 BHP Honda Gasoline Engine w/Electric Start		OPT			OPT			OPT				OPT	
115-volt Out-of-Service Tank Heater w/Thermostat (ZETH)	OPT	OPT	OPT	OPT	OPT	OPT	OPT	OPT	OPT	OPT	OPT	OPT	OPT
Spring Rewind Hose Reel w/Hose Guides (ZSRHS)	OPT	OPT	OPT	OPT	OPT	OPT	OPT	OPT	OPT	OPT	OPT	OPT	OPT



DIAMOND STEEL CO. INC.
 971 N. GEORGE WASHINGTON BLVD.
 YUBA CITY, CA 95993-9067
 (530)674-8577 FAX (530)674-7339

Distributed By: